

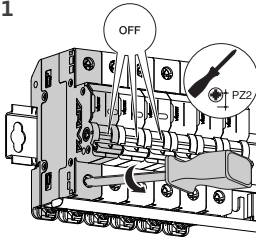
⚠ WARNING:

A Main Switch must be installed by a licensed electrical contractor or electrician only in accordance with national and local building regulations and the Australian and New Zealand wiring rules AS/NZS 3000 latest edition thereof.

REMOVING MAIN SWITCH FROM DIN RAIL, AFTER BUSBAR IS INSTALLED

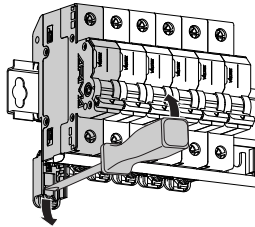
The main switch may be replaced without disconnecting the other products.

1



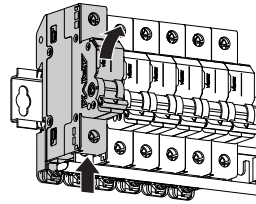
Unscrew the terminal completely

2



Press and pull the Din clip in lowermost position

3



Pull the device upward in order to remove it from the din rail